

N.W. 1/4

44-2

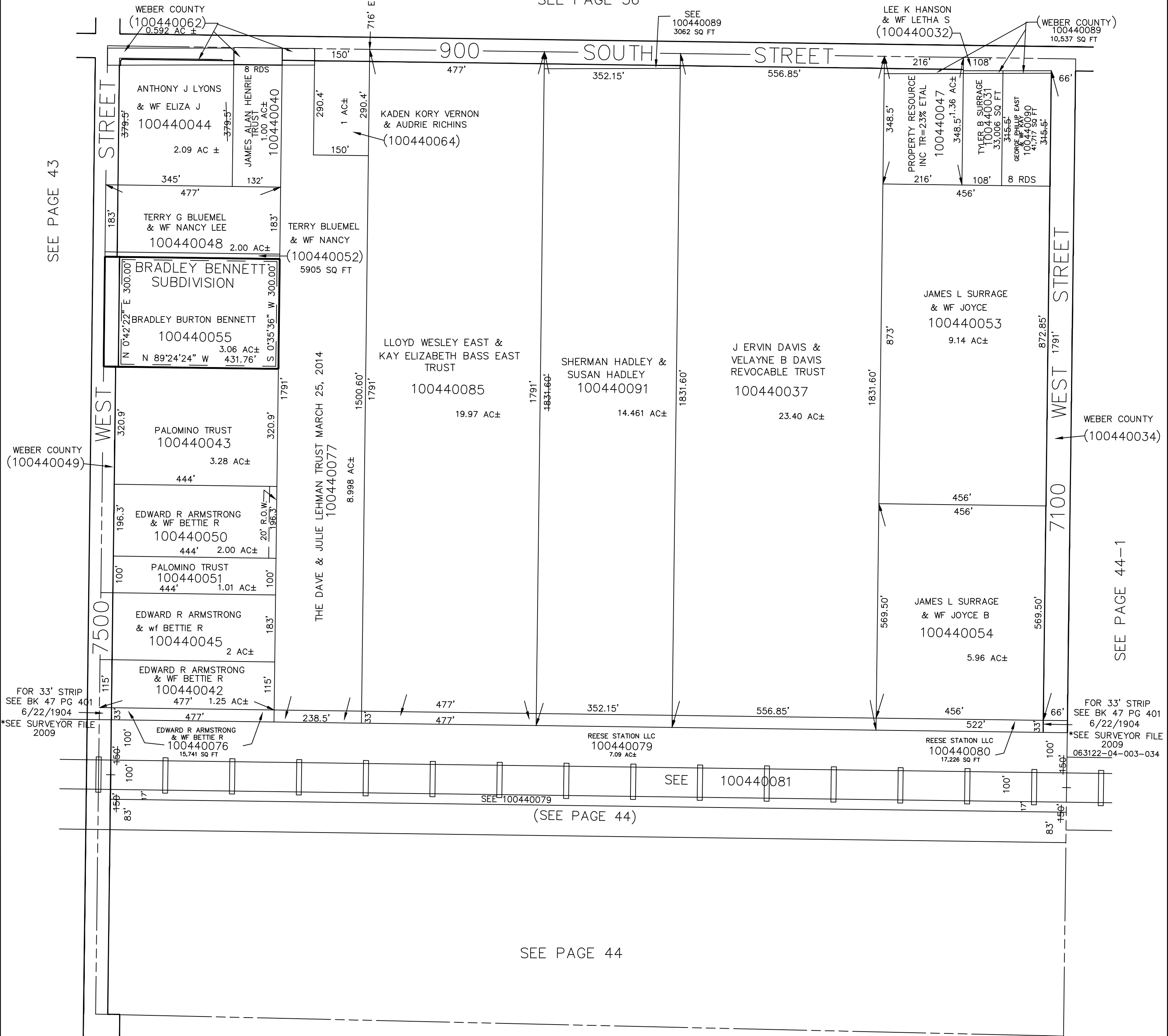
# SECTION 23, T.6N., R.3W., S.L.B.& M.

TAXING UNITS: 303

IN WEBER COUNTY

SCALE 1" = 200'

SEE PAGE 36



SEE PAGE 43

SEE PAGE 44-1

(SEE PAGE 44)

SEE PAGE 44

FOR 33' STRIP  
SEE BK 47 PG 401  
6/22/1904  
\*SEE SURVEYOR FILE  
2009

FOR 33' STRIP  
SEE BK 47 PG 401  
6/22/1904  
\*SEE SURVEYOR FILE  
2009  
063122-04-003-034